



2018 Moreton Bay Multihull Regatta

SAILING INSTRUCTIONS

16 – 19 March 2018

1. RULES

- 1.1. The regatta shall be governed by the following:
 - a. The current edition of the Racing Rules of Sailing (RRS)
 - b. The current Australian Sailing (AS) Special Regulations, Part 1, Category 5.
 - c. The MYCQ Offshore Multihull Rule (OMR) for Racing Divisions 1 & 2.
 - d. Rule 50.2 is changed to allow fixed and retractable spinnaker poles to set spinnakers, screechers and code zeros.
 - e. RRS 52 is changed to allow the use of electric or hydraulic winches.
 - f. RRS 44.1 is changed to a 'one-turn' penalty in lieu of 'two- turns'.
 - g. All Skippers shall supply the Sailing Office with a current, Category 5 form* (Higher category forms will be accepted). Forms are available via the following link: <http://www.sailing.org.au/sport-services/safety/nea-scheme/national-equipmentauditor-form/>

2. NOTICES TO COMPETITORS

Notices to competitors shall be posted on the [RQYS Multihull website](#) and the official notice board located outside the RQYS Marine Sports office.

3. CHANGES TO THE SAILING INSTRUCTIONS

- 3.1. Any change to the Sailing Instructions shall be posted on the [RQYS Multihull website](#) and on the official notice board located outside the RQYS Marine Sports office before 0900hrs on the day it will take effect, except for any changes to the schedule of racing (SI 5), which shall be posted by prior to 1800hrs on the day before it will take effect.
- 3.2. Changes to the Sailing Instructions may also be made prior to the first warning signal by displaying code flag L on the Race Committee vessel and advising of the change by VHF Radio Channel 72.

4. SIGNALS MADE ASHORE

- 4.1. Signals made ashore will be displayed on the RQYS Official Flag Pole located at the Eastern Gangway to the VIP Wharf.
- 4.2. When flag AP is displayed ashore '1 minute' is replaced with 'not less than 45 minutes' in the race signal AP.

5. SCHEDULE

- 5.1. After a long postponement, to alert boats that a race or sequence of races will begin soon, an orange flag will be displayed with one sound at least five minutes before a warning signal.
- 5.2. On the last day of the regatta, no warning signal will be made after 1500hrs.
- 5.3. The Race Committee shall inform competitors on the Official Notice Board of the intentions regarding the sequencing of starts for the days racing in advance.

- 5.4. The Race Committee may change the divisions and start sequence with appropriate notices posted, 'L' flag afloat or ashore and VHF 72 communications. No part of SI 5.4 shall be grounds for Redress by any competitor.
- 5.5. The schedule shall be as follows:

DATE	EVENT	TIME/ WARNING SIGNAL	LOCATION
Friday 16 March 2018	Registration for all yachts	1000hrs – 1330hrs	RQYS Boardwalk Café
	Compulsory Competitors Briefing (req. 2 crew representatives from each yacht)	1300hrs – 1330hrs	RQYS Auditorium
	R1 Twilight Short Passage Race around Local Manly Islands	1500hrs	See Appendix B
	Casual Cocktail Presentation	1800hrs	RQYS Boardwalk Café
Saturday 17 March 2018	R2 Round the Cans Race <i>Racing Divisions 1 & 2 Only</i>	1000hrs	See Appendix A
	Passage Race to RQYS Canaipa at Russell Island – Div 1&2 R3 and Div3 R2	Following Div1&2 R2 – Not before 1200 hrs	See Appendix B
	Dinner at RQYS Canaipa and Daily Presentation (followed – R3 by overnight stay)	Following R3	RQYS Canaipa
Sunday 18 March 2018	Breakfast at RQYS Canaipa	0730hrs – 0830hrs	
	Div 1 & 2 -R4 / Div 3 Long Passage Race from Potts Point	1000hrs	See Course Maps & Appendix B
	Band and Daily Presentation*	1700hrs	RQYS Boardwalk Café
Monday 19 March 2018	Div 1 & 2 - R5 / Div 3 – R4 Short Corners Passage Race	1100hrs	See Appendix B
	BBQ Lunch and Closing Presentation	Following R5 / R4 Resp	RQYS Boardwalk Café

6. CLASS FLAGS AND DIVISIONS

DIVISION DESCRIPTION	SCORING	FLAG
Division 1: OMR Racing	OMR (fixed) & PCF (performance)	Numeral Pennant 1
Division 2: OMR Racing	OMR (fixed) & PCF (performance)	Numeral Pennant 2
Division 3: PCF Cruising	PCF (performance)	Numeral Pennant 3

7. RACING AREAS

Racing areas are indicated and described in Appendix A, B & C.

8. COURSES

- 8.1. The Round the Cans Races (Windward/Leeward) are described in Appendix A.
- 8.2. Passage Races are described in Appendix B. Courses are lettered A through D for Passage Race Courses with a number which provides for shorter versions. The Race Committee may elect to send any fleet on any version of the course to allow for appropriate length races.
- 8.3. The Race Committee start boat will display the designation of the course for each division and the approximate compass bearing of the first leg on the start boat prior to the Warning Signal.

9. MARKS

- 9.1. Designated fixed marks are described in Appendix B and C.
- 9.2. Mark X* will be a pink 'MYCQ' inflatable buoy. For courses that include Mark X, the race committee vessel will display prior to the warning signal green (starboard) or red (port) flag to signal the side on which boats shall leave the mark on the first leg of the race (Appendix B and C).
- 9.3. Laid marks will be inflatable buoys of the colours designated in the course diagrams (Appendix A).
- 9.4. The start/finish pin will be a pink "MYCQ" inflatable buoy.
- 9.5. All navigation marks must be observed to complete a course (Appendix B).

10. THE START

- 10.1. Races will be started by using Rule 26 with the warning signal made five (5) minutes before the starting signal. The start signal of a division will be the warning signal for the next division.
- 10.2. The starting line will be between a staff displaying an Orange Flag on the start vessel at the Starboard end of the line and an Inflatable Pink "MYCQ" buoy at the port end of the line.
- 10.3. Boats shall keep clear of the starting area during the starting sequence for other divisions and shall not pass through the line unless starting. Failure to do so may result in Protest by the Race Committee.
- 10.4. A boat starting later than ten (10) minutes after the starting signal will be scored Did Not Start without a hearing. This changes RRS A4, page 56 and 57.
- 10.5. No part of a boat's hull, crew or equipment shall be on the course side of the triangle formed by the two ends of the starting line and the first mark, during the one minute before the starting signal. Should a boat infringe this rule, the race committee may attempt to broadcast a boat's name and number, on VHF 72. Failure to make a broadcast or to time it accurately will not be grounds for a request for redress. This changes RRS 62.1(a).

11. CHANGE TO THE NEXT LEG OF THE COURSE

To change the next leg of the course, the race committee will move the original mark (or the finishing line) to a new position and advise competitors accordingly.

12. THE FINISH

- 12.1. The finishing line will be between a staff displaying an orange flag on the finishing boat at the starboard end of the line and a pink "MYCQ" inflatable mark at the port end. Boats shall clear the finish line before changing course and shall not pass through the line unless finishing.
- 12.2. In the unlikely event when there is no race committee vessel on station at the finish for passage courses, the alternate finish line will be an extension of the Eastern Port and Starboard Lateral Beacons at the Manly Harbour entrance, with the finish being to the south and within 100m of the port beacon. In this case, skippers are required to take careful note of the finishing time and complete a declaration form which will be available from the Sailing Office. Finish declaration forms shall be lodged at the Sailing Office within 2 hours following the completion of the race and shall include the name of the yacht and skipper and finishing time to Eastern Standard Time (EST). If available, the name of the boats immediately in front & behind the declaring boat shall be listed on the declaration. Declarations may be emailed to sailing@rqys.com.au.

13. TIME LIMITS

- 13.1. For Round the Cans Races, boats failing to finish within 35 minutes after the first boat in their division, will be scored Did Not Finish (DNF) without a hearing. This changes RRS 35, A4 and A5.
- 13.2. The time limit for the first boat to finish shall be five (5) hours after the starting signal of the race, or by 1700hrs, whichever is earlier. Boats failing to finish within six (6) hours of the starting signal, or by 1800hrs, whichever is earlier, will be scored Did Not Finish (DNF) without a hearing. This changes RRS 35, A4 and A5.

14. PROTESTS AND REQUESTS FOR REDRESS

- 14.1. Protest forms are available at the RQYS Sailing Office. Protests and requests for redress or reopening a hearing shall be delivered there within the appropriate time limits nominated below.
- 14.2. For each division, the protest time limit is 2 hours after the last boat has finished the last race of the day or the race committee or race officials signal no more racing that day, whichever is later.
- 14.3. Notices will be posted no later than 30 minutes after the protest time limit to inform competitors of hearings in which they are parties or named as witnesses. Hearings will be held in the protest room in the vicinity of the RQYS Sailing Office beginning at the time posted.
- 14.4. Notices of protests by the race committee or protest committee will be posted to inform boats under RRS 61.1(b).
- 14.5. Breaches of SI 10.3, 10.4, 16 and 20 will not be grounds for a protest by a boat. This changes RRS 60.1(a). Penalties for these breaches may be less than disqualification if the protest committee decides. The scoring abbreviation for a discretionary penalty imposed under this instruction will be DPI.
- 14.6. A request for reopening a hearing shall be delivered no later than 24 hours after the requesting party was informed of the decision.

15. SCORING AND HANDICAPS

- 15.1. The OMR Rule will be applied as a Time Correction Factor (TCF) to the boats elapsed time.
- 15.2. Performance based handicap Performance Correction Factor (PCF) will be used for PHS.
- 15.3. Divisions will be determined by the Race Committee and will not be ground for Redress. This alters RRS 60.1(b).
- 15.4. The Low Point Scoring System will apply.
- 15.5. Two (2) races for the cruising division are required to be completed to constitute a series.
- 15.6. Three (3) races for the racing division are required to be completed to constitute a series.

16. SAFETY REGULATIONS

- 16.1. All skippers shall sign-on with the start boat by radio prior to the first warning signal each day via VHF 72. Skippers shall nominate their boat, sail number and number of crew. Skippers failing to sign-on may have their boats scored DNC, without a hearing. This changes RRS 63.1, A4 and A5.
- 16.2. A skipper of a boat that retires from a race, shall notify the Race Committee as soon as practical.
- 16.3. A boat will be considered to have sign-off when they cross the finish line. No declaration is needed, other than required in the case of SI 12.2.
- 16.4. Competitors shall comply with the following RQYS Policies.
 - (a) Remain within the 6-knot speed at all times within and approaching Manly Harbour.
 - (b) Unless in use, boats shall NOT carry anchors protruding beyond the bow whilst racing.
 - (c) Monitor VHF 72 at all times during the race and during the pre-start period.
 - (d) Not fly any spinnakers or other extras within Manly Harbour. Failure to comply may incur a penalty which may be less than a DSQ.

17. REPLACEMENT OF CREW OR EQUIPMENT

- 17.1. Boats intending to race with a sail number other than that stipulated on their entry shall complete the Change to Sail Number register prior to racing. Failure to comply will result in the boat being scored DNC for all races on that day. This changes RRS 63.1, A4 and A5.
- 17.2. Substitution of damaged or lost equipment will not be allowed for unless authorised by the Race Committee. Requests for substitution shall be made to the Race Committee at the first reasonable opportunity and no later than 2100hrs on evening prior to the next day's racing.
- 17.3. Replacement, change or addition of crew will be permitted with prior approval of the Race Committee. Replacement crew shall be nominated, along with their name, AS Number and weight for the particular day. Changes of crew shall be presented to the Race Committee for authorisation as soon as possible and no later than 0900hrs on the nominated day of racing. Note: SI 17.2 & 17.3 apply only to Divisions 1 & 2. The approval of crew changes is entirely at the discretion of the Race Committee and their decision will be final.

18. EQUIPMENT AND MEASUREMENT CHECKS

- 18.1. A boat or equipment may be inspected at any time for compliance with the Sailing Instructions. On the water, a boat can be instructed by a member of the Race Committee, by an Equipment Auditor or Rating/Measurer and shall proceed immediately to a designated area for inspection.
- 19. The Special Regulations define the fundamental safety requirements required of all boats racing under various categories.

20. OFFICIAL BOATS

Official boats will conspicuously display a Black RC Lettering on a White Background.

21. RADIO COMMUNICATION

- 21.1. Except in an emergency, a boat shall neither make radio transmissions while racing nor receive communications not available to all boats. This restriction also applies to mobile telephones. Failure to comply with this may result in DSQ of the boat concerned at the discretion of the Race Committee or Protest Committee.
- 21.2. Race Officials shall communicate with competing yachts on VHF 72.

22. PRIZES

22.1. Prizes shall be awarded as per the following:

Division 1: Line Honours 1st, OMR 1st, PHS 1st,

Division 2: OMR 1st, PHS 1st

Cruising: PHS 1st

Other prizes may be awarded at the discretion of the RC.

22.2. A minimum of three (3) yachts shall constitute a division.

22.3. The RC reserves the right to allocate a boat to any division. The nominal cut point for Division 1 and Division 2 will be OMR 0.8400. The allocation by the RC shall be final.

23. DISCLAIMER OF LIABILITY

Competitors participate in the regatta entirely at their own risk. See RRS Fundamental Rule 4, Decision to Race. The Organising Authority will not accept any liability for material damage or personal injury or death sustained in conjunction with or prior to, during, or after the series.

24. INSURANCE

24.1. Each participating boat shall be insured with valid third-party liability insurance with a minimum cover of 10 million AUD per incident or the equivalent.

24.2. Each competitor shall be required to produce a copy of their valid Insurance certificate at registration between 1000hrs to 1330 hrs.

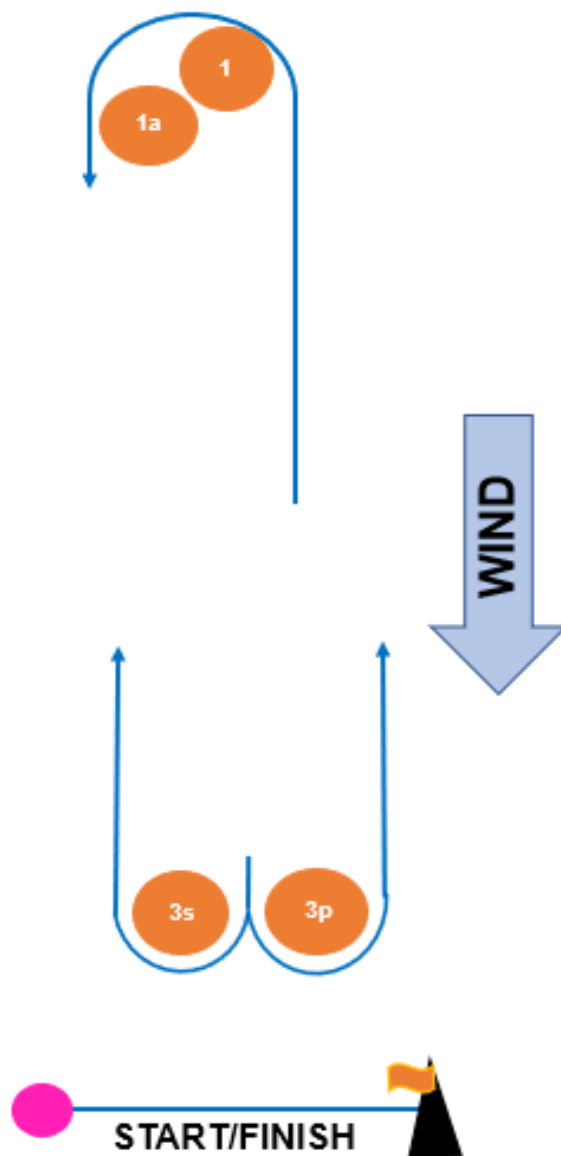
25. RESULTS

Results shall be posted at www.rqys.com.au/result

APPENDIX A

Round the Cans Course

CODE	COURSE	MARKS DESCRIPTION
L1	Start – 1 – 1a – Finish	Marks 1, 1a, 3s & 3p: Orange Inflatable
L2	Start – 1 – 1a – 3s/3p – 1 – 1a – Finish	Start/Finish Pin &: Pink 'MYCQ' Inflatable
L3	Start – 1 – 1a – 2s/2p – 1 – 1a – 2s/2p – 1 – 1a – Finish	



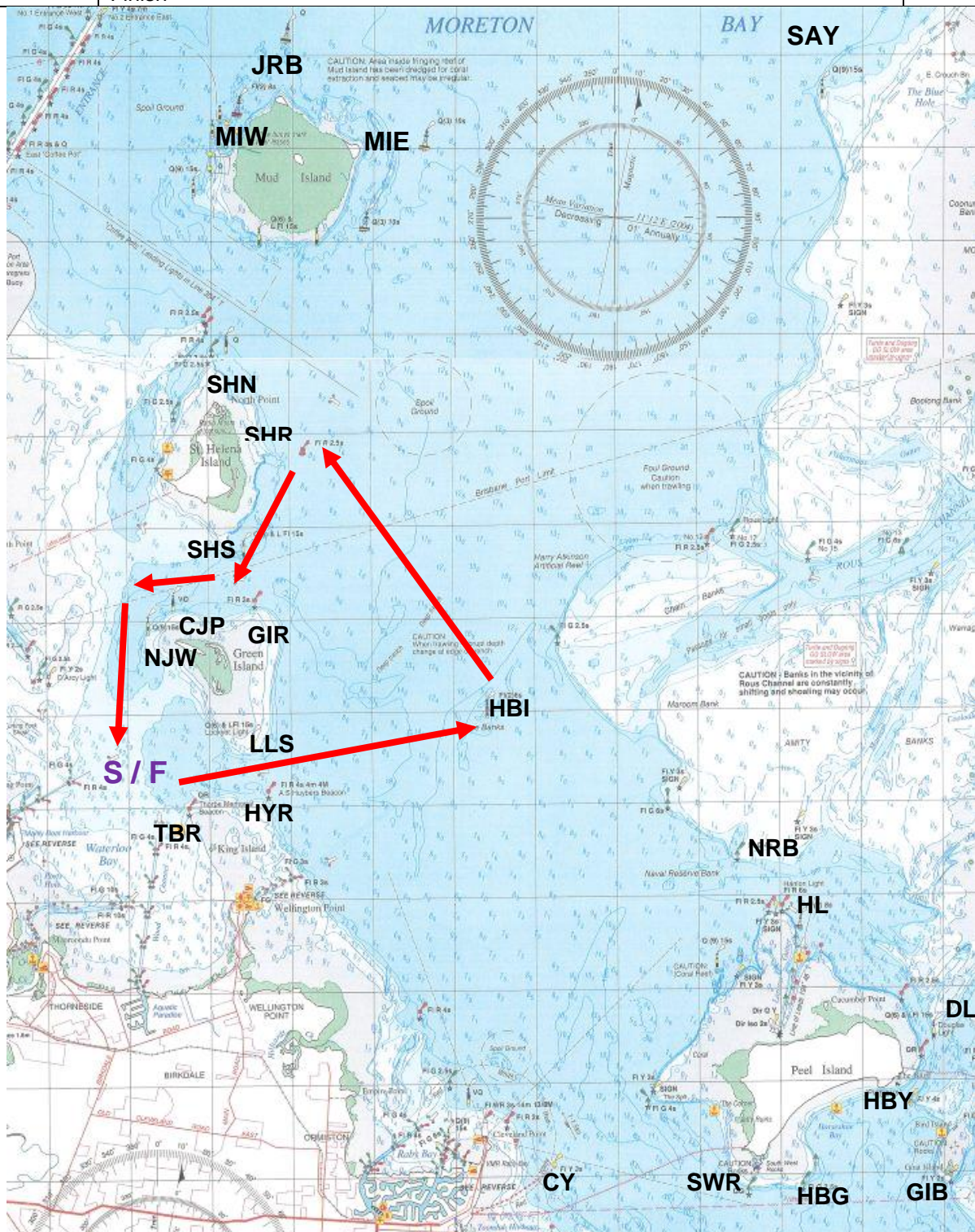
APPENDIX B: PASSAGE COURSES

Passage Courses

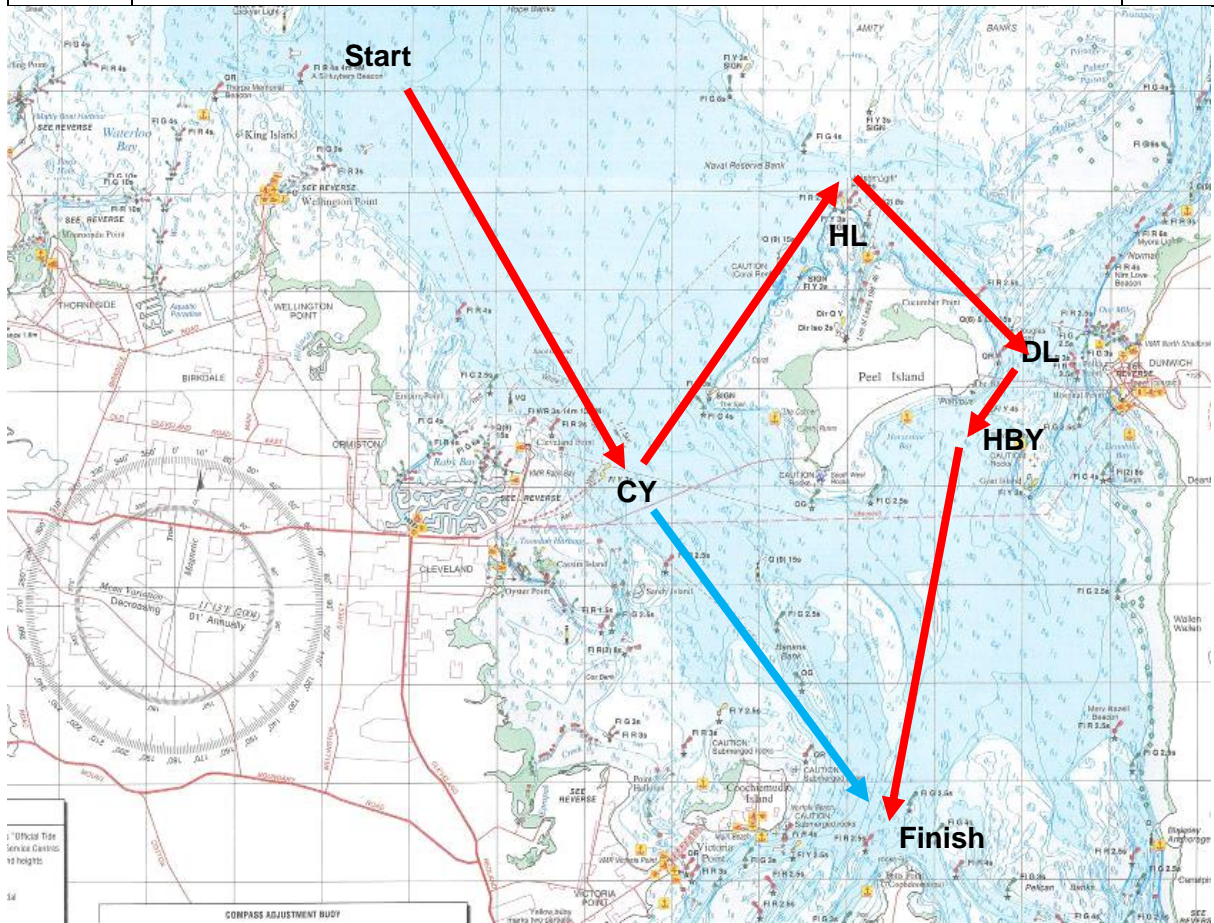
DESIGNATED MARKS USED FOR RQYS RACING

Description		Approximate Position	
Start/Finish – Inside Waterloo Bay East of the Manly Boat Harbour Leads			
MIW	2 x West Cardinal Beacons off Mud Island	27°19.8S	153°13.8E
JRB	Jeay's Reef Buoy - North Cardinal Beacon	27°18.9S	153°14.9E
MIE	East Cardinal Beacon off Mud Island	27°19.9S	153°16.5E
NJW	Norman J Wright Beacon (West Cardinal)	27°25.2S	153°13.2E
SHR	Red Buoy East of St Helena Island	27°23.2S	153°15.2E
LLS	Lockyer Light South Cardinal Beacon	27°26.5S	153°14.4E
GIR	Red Beacon NE of Green Island	27°24.8S	153°14.6E
EE	Eric Early Beacon	27°37.4S	153°24.2E
HL	Hanlon Light	27°28.2S	153°21.0E
DL	Douglas Light	27°29.5S	153°22.8E
GIB	Goat Island Beacon FI Yellow 2s	27°31.2S	153°23.1E
CY	Yellow Buoy SE of Cleveland Point	27°30.9S	153°18.1E
HYR	Huybers Beacon	27°26.9S	153°14.6E
CJP	Crawford James Pattison Beacon (Nth Cardinal)	27°24.7S	153°13.6E
SWR	Green Beacon (QG) S-W Rocks	27°31.3S	153°20.6E
HBV	FI Y 4s Eastern End Horseshoe Bay	27°30.3S	153°22.4E
SHN	North Cardinal Beacon St Helena Island	27°22.3S	153°14.1E
HBI	Hope Banks Beacon	27°26.15S	153°17.4E
PIG	Green Beacon West of Peel Island	27°30.26S	153°19.4E
MBG	Green Beacon off Maroom Bank	27°27.03S	153°19.6E
SAY	Sand Hills Yellow	27°16.86S	153°22.9E
SHS	South Cardinal Beacon St Helena Island	27°24.4S	153°14.4E
MHB	Merv Hazell Beacon	27°33.6S	153°24.1E
HBG	Green Beacon (FI G 2.5s) W Horseshoe Bay	27°31.2S	153°21.8E
TBR	Thorpe Beacon NW of King Island	27°27.2S	153°13.7E
PPG	Green Beacon (FI G 2.5s) North of Potts Point	27°34.3S	153°21.8E
NRB	Green Beacon (FI G 4s) Naval Reserve Banks	27°27.6S	153°20.4E

A (1)	Start – LLS (P) – HBI (P) – SHR (P) – SHS (S) – CJP (P) – NJW (P) – Finish	12nm
A (2)	Start – LLS (P) – HBI (P) – SHR (P) – SHS (S) – CJP (P) – NJW (P) – Start/Finish – LLS (P) – HBI (P) – SHR (P) – SHS (S) – CJP (P) – NJW (P) – Finish	24nm

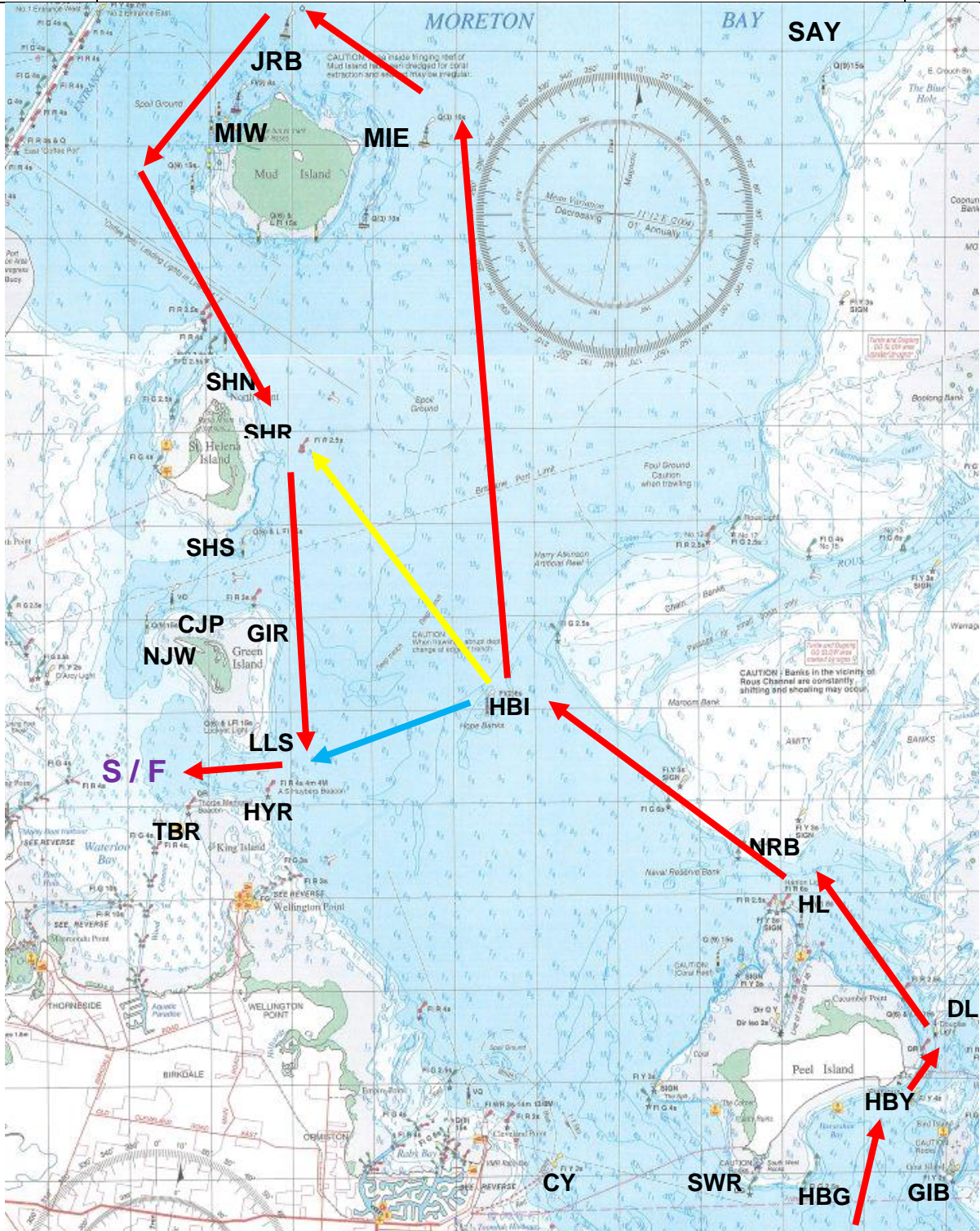


B (1)	Start – CY (P) – HL (S) – DL (P) – HBY (P) – Finish	15nm
B (2)	Start – CY (P) – Finish	9nm





C (1)	Start –HBY (S) – DL (S) – HL (P) – NRB (S) – HBI (P) – MIE(P) – JRB (P) – MIW (P) – SHR (P) – LLS (S) – Finish	30nm
C (2)	Start –HBY (S) – DL (S) – HL (P) – NRB (S) – HBI (P) – SHR (P) – LLS (S) – Finish	19.5nm
C (3)	Start –HBY (S) – DL (S) – HL (P) – NRB (S) – HBI (P) – LLS (S) – Finish	15nm





D (1)	Start – NJW (S) – CJP (S) – GIR (S) – HBI (P) – SHR (P) – HBI (P) – SHR (P) – SHS (S) – CJP (P) – NJW (P) – Finish	
D (2)	Start – NJW (S) – CJP (S) – GIR (S) – HBI (P) – SHR (P) – SHS (S) – CJP (P) – NJW (P) – Finish	

